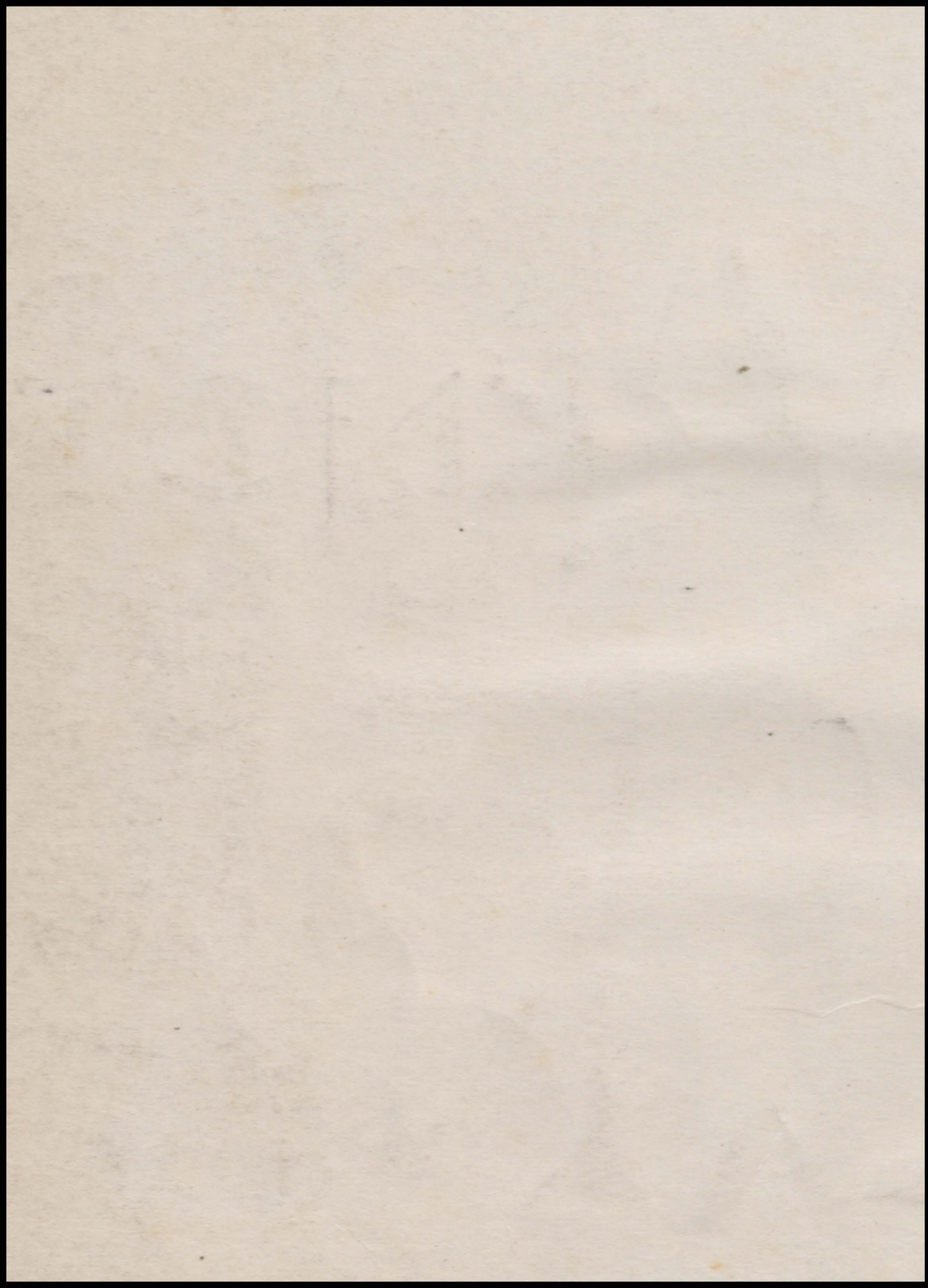


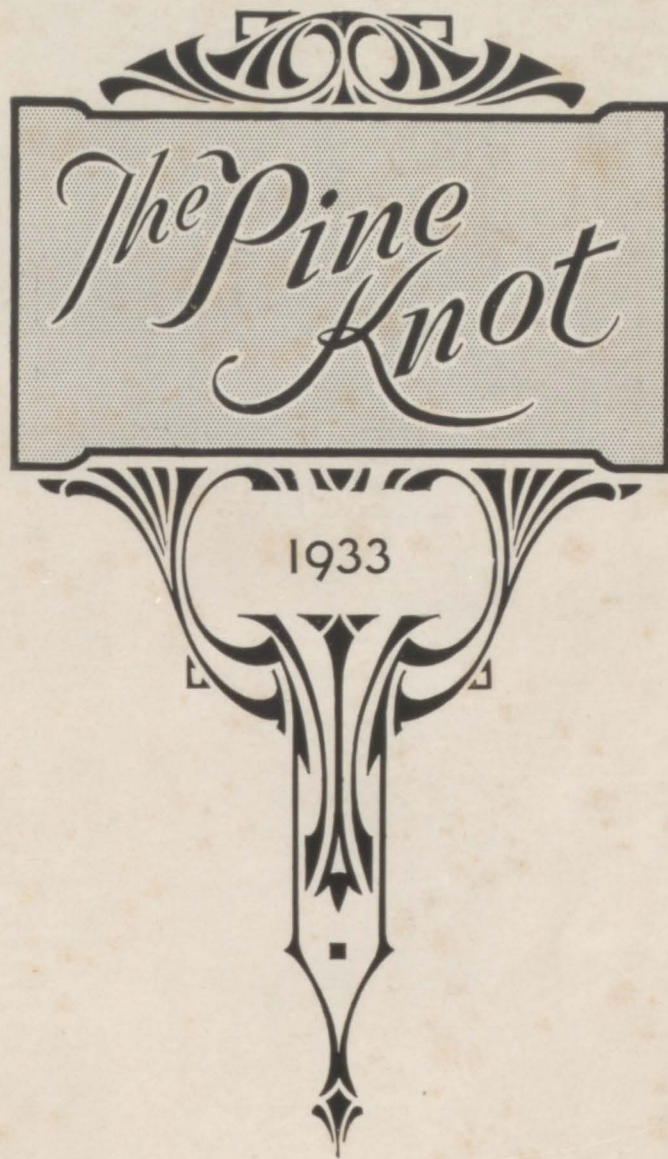


# PINE KNOT


1933







Grove City High School


**THE PINE KNOT**



**H. M. B. LEHN**  
 Lebanon Valley College, A.B.  
 Grove City College, A.M.  
 Superintendent of Schools

**G. H. CROWTHER**  
 Grove City College, Ph.B., A.M.  
 High School Principal

**MEMBERS OF FACULTY**

**BERNICE ATWELL**  
 Grove City College, Litt.B.  
 Physical Education  
 Sponsor Girl's Class Basketball.  
**MARY BARBER**  
 Grove City College, A.M.  
 French, Latin.  
**ELEANOR BARNES**  
 Grove City College, Litt.B.  
 History, Civics.  
**SELKIRK BURGESS**  
 Trinity College, London, L. T. C. L.  
 Grove City College, B. Mus. A. M.  
 Supervisor Public School Music.  
 Sponsor Senior Orchestra, Mixed  
 Chorus.  
**BESS B. CAMPBELL**  
 Grove City College, Ph.B.  
 English.  
**MARGARET CAMPBELL**  
 Grove City College, A.B.  
 Mathematics  
**EUGENIE COULTER**  
 Grove City College, B.S.  
 Mathematics.  
**MARGARET R. CUBBISON**  
 Grove City College Litt.B.  
 History, Democracy, Civics.  
**HELEN FORREST**  
 Grove City College, Litt.B.  
 English, Public Speaking.  
**JOSEPH A. HARTMAN**  
 Grove City College, B.C.S.  
 Commercial Geography, Athletics  
 Sponsor Varsity Football,  
 Basketball, Hi-Y.  
**MRS. EDITH HOUSTON**  
 Grove City College Ph. B.  
 Stenography, Typewriting,  
 Business English.

**MARGARET HOUSTON**  
 Grove City College, Ph.B.  
 History, Civics, English.  
**HUBERT JACK**  
 Slippery Rock State Normal  
 Physical Education  
 Sponsor Varsity Track, Class  
 Basketball, Varsity Basketball.  
**MAUDE JAMISON**  
 Grove City College, Litt.B.  
 Public Speaking, English  
 Sponsor Tri-Hi.  
**ELENA JOHNSTON**  
 Grove City College, A.M.  
 English  
 Sponsor Good Time's Gang.  
 Rho Kappa Sigma.  
**HELEN KEPNER**  
 Ohio University, B.S. in Ed. in H. Ec.  
 Iowa State  
 Instructor in Foods.  
**BEN F. MARSHALL**  
 Indiana State Teachers College, B.S.  
 Public School Music.  
 Sponsor Band, Boy's Chorus.  
**ARTHUR McBRIDE**  
 Grove City College, A.B.  
 Mathematics, Athletics  
 Sponsor Junior Hi-Y.  
**GENEVIEVE McMULLEN**  
 Grove City College, Litt.B.  
 French, Civics, Public Speaking.  
**ELIZABETH MONTGOMERY**  
 Grove City College, B.S.  
 Science.  
**LEROY NUTT**  
 Grove City College, B. S.  
 Science; Sponsor Science Club.

**LUCELLE PERSCH**  
 Carnegie Institute of Technology,  
 B.S. in Costume Economics.  
 Clothing Instructor.  
 Sponsor Sha Club  
**GLENNA ROBBINS**  
 Grove City College, A.M.  
 Journalism, Civics.  
 Sponsor Gold and White, Quill  
 and Scroll.  
**KATHERINE SMITH**  
 Grove City College, B. M.  
 Public School Music.  
 Sponsor Tri-Hi, Girls' Chorus.  
 Junior Orchestra.  
**HARLAND J. SURRENA**  
 Grove City College, B.S.  
 Science  
 Sponsor Junior Science Club.  
**LEONA TAGGART**  
 Grove City College, L'tt.B.  
 History, English.  
**HAROLD W. THOMAS**  
 Grove City College, B.C.S.  
 Bookkeeping.  
**MARGARET WASHABAUGH**  
 Grove City College, A.B.  
 Latin.  
**REBECCA WASHABAUGH**  
 Grove City College, Ph.B.  
 Latin  
**ORPHA SCOLLARD**  
 School Nurse.  
**MRS. VERA H. FILER**  
 Substitute Nurse.  
**MARY HANNA**  
 Superintendent's Secretary.

**BOARD OF EDUCATION**

**M. W. GRAHAM, President**  
 A.B., Grove City College  
**C. K. KENNEDY**  
 Ph.G., University of Pittsburgh.

**W. A. REDMOND**  
 V. President.  
**W. F. ROSSMAN**  
 Clarion State Normal,  
 D.O., Kirksville College  
**R. B. DONALDSON**

**B. A. MONTGOMERY**  
 A.B., Grove City College  
 M.D., University of Pennsylvania.  
**MRS. LORETTA MONROE**  
 M.S., Grove City College.  
**MARY FREW**  
 Secretary of the Board of Education.



THE PINE KNOT



**CLASS OFFICERS**

President, Paul Smith

Vice-President, Elmer Duffy  
Treasurer, Edward Bowden

Secretary, Betty McCurdy

CLASS FLOWER—Rose

CLASS COLORS—Red and White

**“PINE KNOT STAFF”**

Mae Dickey  
Roberta Drake  
Thelma Hillkirk  
Clifford Hoffman  
Fay Layton  
Glenn Mathieson

James McWilliams  
Bill Miller  
Alice O'Neill  
Thelma Perry  
Ida Rose Reynolds  
Irene Schmelzer

Mary Steckler  
Merrill Vincent  
Jack Welch  
Paul Westlake  
Miss Johnston, Adviser.



**ADAMS, KENNETH**

Sr. Science Club 4; Sr. Hi-Y 4; Football 1-2-3-4; Track 3-4; Special Gym 1-2-3-4; Class Basketball 1-2.

**ALLEN, JEAN**

Class Basketball, 1-3-4; Varsity Basketball 2; Baseball 3; Ring Tennis 2-3; Chorus 1-2-3-4; Music Literary 4; Honorary Varsity Basketball Team 3; Gym Ex. 1-3.

**ANDERSON, ANNA RUTH**

Class Basketball 1-3; Varsity Basketball 2; Chorus 2-3-4; Sha Club 4; Ring Tennis 2; Gym Exhibition 1; Junior Chorus 1; Gold and White 4.

**ANNABLE, WILLIAM**

Jr. Orch. 1-2; Boys' Chorus 3-4; Special Gym 1; Gamma Tau Gamma 2-3-4.

**ARNOLD, GEORGE**

Class Basketball 1-2; Track 1-2-3-4; Special Gym 3;

**ARROW, GEORGE**

Class Basketball 2-3-4; Class Football 3-4.

**AUGUST, ROBERT**

Dramatic Club 1-2, Brockway, Pa.; Track 3-4; Class Basketball 3-4; Sr. Science Club 4.

**AYLSWORTH, MARTHA**

Baseball 2; Rho Kappa Sigma 3-4; Home Room Reporter 3-4.

**BARRON, MARGARET LOUISE**

**BARTHOLOMEW, JOHN**

Band 2-3-4; Orch. 1; Chorus 2; Hi-Y 3-4; Gamma Tau Gamma 2-3-4.

**BENGS, WILLIAM**

Chorus 3; Class Basketball 2-3-4; Class Football 3-4; Class Play 3.

**BIRNLEY, MERLE**

Band 3-4; Chorus 2-3-4; Class Basketball 1-3-4; Class Football 4.



THE PINE KNOT

BIXLER, ORRIN

Football 1-2-3-4; Class Basketball 3-4.

BLACK, KENNETH

Band 1-2-3-4; Chorus 3-4; Hi-Y 2-3-4.

BLACK, MARTHA

Class Basketball 1-2; Pine Knot Debate 1; Round-Up 2-3; Sohp. Play 2; Chorus 2-3-4; Gold and White Staff 3-4; Quill & Scroll 3-4; Tri-Hi-Y 2-3-4; Gamma Tau Gamma 2-3-4; Gym Exhib. 3; Jr.-Sr. Banquet Committee 3; Jr. Chorus 1;

BOLLINGER, ADDA

BONANNI, GOLDIE

Lincoln Club 1; Orchestra 1; Basketball 1; Sha Club 4.

BOWDEN, EDWARD

Band 1-2-3; Chorus 2; Jr. Hi-Y 2; Sr. Hi-Y 3-4; Class Treasurer; Student Council 2-3-4; Pres. Stu. Council 4; Jr. Science Club 3; Science Club 3-4; Gym Exhibition 1-2; Gamma Tau Gamma 2-3-4; Class Football 3-4; Class Basketball 1-2-3-4.

BOWDEN, CARRIE VIRGINIA

Posture Contest 3; Gym Exhibition 3; Gold and White 3; Orchestra 1-2-3-4; Chorus 1-2; Ring Tennis 2; Tri-Hi-Y 2-3-4.

BRAINE, HARVEY

Football 2-3-4; Track 2-3-4; Special Gym 1-2-3-4; Hi-Y 3-4; Jr. Science Club 3; Class Basketball 1-2-3-4.

BRENNEMAN, ETHEL

Gym Exhibition 1; Posture Contest 3.

BRIGGS, JOHN

Class Basketball 2-3-4; Class Football 3-4.

BRIGHT, KENNETH

Hi-Y, New Kensington High School.

BROWN, GORDEN

Class Football 3-4; Class Basketball 4.



THE PINE KNOT



**BROWN, LENORE**  
Sha Club 4; "The Man Who Married a Dumb Wife" 4.

**BRUNTON, RALPH**  
Varsity Football 2-3-4; Varsity Basketball 3; Class Basketball 1-2-4.

**BRYANT, JAMES**  
Jr. Science Club 3; Sr. Hi-Y 4; Football 3; Basketball 3; Jr. Hi-Y 2; Class Basketball 1-2.

**BURNETTE, JOHN**  
Band 1-2-3-4; Chorus 2; Brass Quartette 2; Jr. Orchestra 1; Gamma Tau Gamma 2-3-4.

**BUTLER, HILDA**  
Gym Exhibition 1-2.

**BUXTON, HAZEL**

**CAMERON, AGNES**  
Chorus 2-3-4; Special Gym 1-3; Class Basketball 1-2-3-4; Play Day, 3; Ring Tennis 1-2.

**CANGEMI, PETER**  
Class Basketball 2-3-4; Class Football 3-4; Football 3-4.

**COKAIN, JAMES**  
Class Football 4; Class Basketball 4.

**COLOSIMO, PATSY**  
Class Football 4; Class Basketball 2-3-4.

**COOKSON, MABEL**  
Sha Club 4; Special Gym 1; Chorus 2.

**COOKSON, ROBERT**  
Class Basketball 1-2-3-4; Class Football 3-4.




**THE PINE KNOT**

**COULTER, ELTON**

Class Basketball 2-3-4; Class Football 3-4.

**COULTER, FLOYD**

Track 2-3-4; Special Gym 3-4; Class Basketball 1-2.

**COULTER, MARY**

**COULTER, RUTH**

**DAUGHERTY, JAMES**

Chorus 3-4; Gold and White Staff 3-4; Senior Hi-Y 4; Quill and Scroll 4.

**DI BARTOLOMEO, FRANDIE**

Class Football 2.

**DICKEY, MAE**

Gym Exhibition 1; Sha Club 4; Pine Knot Staff 4; Play Day 3; Honorary Baseball 3.

**DICKSON, BESSIE**

Gym Exhibition 1; Posture Contest 3; Baseball 3.

**DRAKE, ROBERTA**

Sr. Orchestra 1-2-3; Jr. Orchestra 1; Tri-Hi-Y 3-4; Gym Exhibition 2-3; Chorus 1-2; Sophomore Program; Junior Program; Gamma Tau Gamma 2-3-4; Pine Knot Staff 4; Chapel Plays 3-4.

**DUFFEY, ELMER**

Jr. Science Club 3; Sr. Science Club 4; Hi-Y 4; Jr. Hi-Y 2; Special Gym 2-3-4; Slass Basketball 2; Class Vice-President; Class Football 3-4.

**DUFFY, SARA**

**FASCETTI, FLORA**

Lincoln Club 1; Sha Club 4.



THE PINE KNOT



**FILER, ELEANOR**  
Posture Contest 3.

**FORKER, ELEANOR**  
Tri-Hi-Y 1-2-3-4; Student Council 2-3-4; Varsity B.B., 2; Class B.B., 1-2-3-4; Special Gym 1-2-3; Contest 2; Pine Knot 3; "Stuffed Owls" 3; "The Man Who Married a Dumb Wife" 4.

**GEORGE, HAROLD**  
Band 3-4; Chorus 4; Jr. Hi-Y 2; Sr. Hi-Y 3; Science Club 4; Gym Exhibition 1-2; Contest 4; Class Football 2-3; Gamma Tau Gamma 2-3-4.

**GHOST, JOHN**  
Class Basketball 1-2; Hi-Y 3; Science Club 4.

**GIBB, GERALD**  
Band 1-2; Contest 1; Class Basketball 1-2.

**GIESMAN, CARL**  
Band 2-3-4; Orchestra 3-4; Chorus 2-4.

**GILDERSLEVE, WILBUR**  
Class Basketball 4; Class Football 3-4.

**GILES, FRANCES**  
Franklin H.S. 1; Jr. B.B. 2-3; Sr. Play 4.

**GILLS, EDITH**  
Gym Exhibition 1; Class Basketball 4; Sha Club 4.

**GREGG, HORACE**  
Orchestra 1-2-3-4; Band 3-4; Hi-Y 3-4; Science Club 3-4; Varsity Football 3-4; Chorus 2; Gamma Tau Gamma 2-3-4; Sr. Play 4.

**GURSKY, JOHN**  
Varsity Basketball 2-3; Football 2-3; Track 2-3; Jr. Science Club 3; Class Football 4; Class Basketball 4; Varsity G 3-4; Band 3-1.

**HALL, BERNICE**  
Music Lit. Contest 2-3-4; N.W.P. I.M.A. Contest 1-2-3-4; Round-Up 3-4; Tri-Hi-Y 2-3-4; Girls' Chorus 1-2; Sr. Orch. 2-3-4; Jr. Orchestra 1; Gym Exhib. 2-3; Gamma Tau Gamma 2-3-4; Chapel Plays 3-4; Jr. Sr. Banq. Com. 3.



**HAMILTON, BERNICE**

Home Room Reporter 1-2; Jr. Chorus 1.

**HAMILTON, ERMA**

**HARSHAW, EMILY**

Tri-Hi-Y 1-2-3-4; Gym Exhibition 2-3; Sr. Orchestra 1-2-3-4; Band 2-3-4; Class Basketball 1-2; Music Lit. Contest Play 4; Chapel Play 3.

**HASTINGS, WAYNE**

Class Football 4; Class Basketball 4.

**HAUN, CLARISSA**

Ring Tennis 2-3; Volley Ball 2; Class Basketball 3.

**HEDGLIN, VIOLET**

Baseball 1-2; Ring Tennis 1-2.

**HENNON, BERNEICE**

Chorus 2-3-4; Special Gym 1; "The Wedding" 3; Jr. Chorus 1; Jr. Orchestra 1; Music Lit. Contest 4; Round-Up 4; Home Room Reporter 4.

**HENSON, MARY**

**HILLKIRK, THELMA**

Sha Club 4; Pine Knot Staff 4; "Stuffed Owls" 3; "The First Christmas" 4.

**HOAGLAND, HAROLD**

Chorus 3; Hi-Y 3-4; Football 2-3-4; Basketball 2-3-4 Class Basketball 1; Jr. Science Club 3; Varsity G. Club.

**HOFFMAN, CLIFFORD**

Class Basketball 2-3-4; Class Football 3-4; Pine Knot Staff 4; Extemporaneous 2.

**HOLAUS, GERALDINE**

Gym Exhibition 1; Varsity Basketball 2; Class Basketball 3-4; Ring Tennis 2; Volley Ball 2; Baseball 2.




**THE PINE KNOT**



**HOLMES, MARIE**

Sha Club 4; Gym Exhibition 1-3;  
Baseball 2; Class Basketball 1;  
Ring Tennis 3.

**HOUSTON, GRACE**

Gym Exhibition 1.

**HUEP, LUISE**

Band 1-2-3-4; Orch. 1-2-3-4;  
Chorus 1-2-3; Tri-Hi-Y 3-4; Class  
B.B. 1-2; Contest 1-2-3-4; Gold  
and White 4; Quill and Scroll 4;  
Woodwind Ensemble 1-2-3-4;  
Gamma Tau Gamma 2-3-4; Gym  
Exhib. 3; Class Play 3; Jr. Orch.  
1; Round-Up 2-3; Music Lit. 1;  
Flute Solo 1-2-3-4.

**HUSKIN, BEVA**

Jr. Orchestra 1-2; Sr. Orchestra  
3-4; Chorus 4.

**HUTCHESON, ETHEL**

Gym Exhibition 1.

**IFFT, BRUCE**

**IRWIN, HELEN**

Tri-Hi-Y 3-4; Sha Club 4; Spe-  
cial Gym 1-3; Ring Tennis 2.

**ISACCO, KAYE**

**KENNEDY, KATHERINE**

Wesley Hi Chorus 3; Venango  
County Round-Up 1;

**KERR, PEARL**


**KETLER, ELEANOR**

Contest 2-3-4; Sophomore Play;  
Junior Play; Pine Knot Staff 2-  
3; Quill and Scroll 3-4; Tri-Hi-  
Y 1-2-3; Gold and White 1.

**KING, JOSEPHINE**

Class Basketball 2-3-4  
Special Gym 2-3; Play Day 3;  
Baseball 2-3; Sha Club 4.




**THE PINE KNOT**

**KNAUFF, VERA BELLE**

**KRAH, MARY ESTHER**  
Sha Club 4; Special Gym 1-2.

**KUHN, ORPHA**

**KUHN, WILLIAM**  
Football 2-3; Special Gym 3-4;  
Sophomore Play 2; Gamma Tau  
Gamma 2-3-4; Chapel Play 3-4.

**LAYTON, FAY**

Gym Exhibition 1; Chorus 2;  
Class Basketball 1-4; Pine Knot  
Staff 4; Ring Tennis 2.

**LEONE, ANTHONY**

Football 4; Gym Exhibition 1.

**LINDERMAN, JOHN**

Science Club 4; Boys' Chorus 1;  
Gamma Tau Gamma 2-3-4.

**LITTLE, ALFRED**

Class Basketball 1-2-3-4; Class  
Football 3-4.

**MACKELL, FREDERICK**

Class Football 4; Class Basket-  
ball 4.

**MARTIN, CLARENCE**

Wesley High School 1-2-3; Wes-  
ley High Mushball Team; Chor-  
us 3.

**MATHIESON, GLENN**

Gym Exhibition 2-3; Class Bas-  
ketball 3-4; Class Football 3-4;  
Pine Knot Staff 4.

**McBRIDE, PAULINE**

Chorus 1; Tri-Hi-Y 3-4; Gold  
and White 1-2; Class Program 2;  
Plays 4; Gym Exhibition 1; Con-  
test 3-4; Round-Up 2-3.



THE PINE KNOT



McCARL, DAVID

Science Club 4; Boys' Chorus 1-2;  
Special Gym 3-4; Track 2-3-4.

McCLELLAND, MILDRED

McCURDY, BETTY

Sr. Orch. 1-2; Tri-Hi-Y 1-2-3-4;  
Var. B.B. 1-2; Class B.B. 3-4;  
Pine Knot 1; Gold and White 2-3-4;  
Baseball 2-3; Round-Up 1-2;  
Plays 3-4; Class Secretary 4;  
Gym Exhib. 1-2-3; Jr. Sr. Banq. Com. 3;  
Ring Tennis 3; Chorus 1-2-3-4;  
Gamma Tau Gamma 2-3-4.

McDOUGALL, JOHN

McDOUGALL, LOIS

Tri-Hi-Y 3-4; Contest 4; Round-Up 3;  
Plays 4; Gym Exhibition 1; School Program 4.

McGOWAN, MARY

Sha Club 4; Gym Exhibition 1.

McKEE, RUPERT

Class Basketball 3-4.

McWILLIAMS, JAMES

Jr. Science Club 3; Pine Knot Staff 4;  
Class Basketball 1-2-3-4; Class Football 3-4.

MENDENHALL, ELWYN

Band 2-3-4; Orchestra 1-2-3; Jr. Hi-Y 2;  
Track 1-2; Asst. Track Mgr. 3; Contest 4.

MEYER, JACK

Band 2-3-4; Hi-Y 4; Jr. Hi-Y 2; Class Basketball 2-3-4;  
Class Football 3-4.

MILES, CLARENCE

Football 2-3; Track 1; Class Basketball 3-4;  
Class Football 4.

MILLER, LAURA



# THE PINE KNOT

**MILLER, RALPH**

Hi-Y 4; Football 3-4; Track 1-2-3-4; Special Gym 4; Jr.-Sr. Science Club 3-4; Gold and White 3-4; Class Basketball 4; Class Football 4; Bible Study 3-4; Wrestling 4.

**MILLER, WILLIAM**

Hi-Y 3-4; Science Club 4; Jr. Hi-Y 2; Jr. Science Club 3; Special Gym 2-3; Pine Knot Staff 4; Gym Exhibition 2-3.

**MONTGOMERY, MARY**

Rho Kappa Sigma 4; Chorus 2; Gym Exhibition 2; Class Basketball 2-3; Music Lit. Contest 3.

**MONTGOMERY, MARGARET**

Sr. Orch. 1-2-3-4; Jr. Orch. 1; Sr. Chorus 2-3; Jr. Chorus 1; Gold and White 3-4; Quill and Scroll, 3-4; Round-Up 1-2-3-4; Music Lit. Contest 4; Class Basketball 2-3-4; Gym Exhibition 1-3; Gamma Tau Gamma 2-3-4; Northwestern Contest 3.

**MILLSOP, ELEANOR**

Orchestra 1-2-3-4; Gold and White 4; Gamma Tau Gamma 2-3-4; Jr. Orchestra 1; Sr. Chorus 2.

**MOORE, GEORGE**

Football 1-2-3-4; Basketball 1-3-4; Track 1-2-3-4; Special Gym 1-2-3-4; Jr. & Sr. Science Club 3-4; Class B.B. 2; Varsity G. Club, President 3-4; Bible Study 3-4.

**MOORE, ROSE**

Sha Club 4; Home Room Reporter 4; Varsity B.B. 1; Class B.B. 1-2-3-4; Contest Play 4; Gym Exhibition 1-2-3.

**MULQUEEN, MARGARET**

Sha Club 4; Class Basketball 1-2-3-4; Student Council 3-4; Special Gym 3.

**MYERS, RAYMOND**

Varsity Football 2-3-4; Special Gym 3-4; Sr. Hi-Y 4; Jr. Science Club 3; Sr. Science Club 4; Class Basketball 1-2-3-4; Varsity G. Club 4; Wrestling 3-4; Gamma Tau Gamma 2-3-4.

**NEELY, LOUELLA**

Jr. Chorus 1; Sr. Chorus 2-3-4; Class Basketball 2; Ring Tennis 3; Baseball 2; Sha Club 4; Gym Exhi. 1; Gold and White Staff 4.

**NICKERSON, JOE**

Band 1-2-3-4; Chorus 2-3-4; Sr. Hi-Y 3-4; Jr. Hi-Y 2; Orchestra 3; Sr. Science Club 4; Gamma Tau Gamma 2-3-4; Contest 3-4; Class Basketball 3-4.

**O'NEILL, ALICE**

Sha Club 4; Pine Knot Staff 4.



THE PINE KNOT



OSBORNE, HOMER

Class B.B. 1-2; Var. B.B. 3-4; Class F.B. 3-4; Asst. F.B. Mgr. 2-3; F.B. Mgr. 4; Jr. Hi-Y 2; Sr. Hi-Y 3-4; Jr. Sci. Club 3; Sci-Club 3; Pine Knot 3; Band 2-3-4; Orch. 3; Chorus 2-3; Gym Exhib. 1-2; Spec. Gym 3-4; Wrestling 4; Gamma Tau Gamma 2-3-4; Varsity G. 4; Cheer Leader 3-4.

OSBURN, GLADYS

Jr. Orchestra 1-2; Sr. Orch. 2-3-4; Chorus 2; Quill and Scroll 3-4; Gold and White 3-4; Class Basketball 2; Class Baseball 2; Special Gym 1; Round-Up 2-4.

PAINTER, MARGARET

Baseball 3.

PARKER, HERSCHEL

Class Basketball 2-3-4; Class Football 3-4; Jr. Science Club 3.

PATRICK, EDITH

Chorus 3-4; Ring Tennis 2.

PATTERSON, FREDA

Chorus 3-4; Class Basketball 1-2-3-4; Baseball 1-2-3-4; Ring Tennis 1-2-3-4; Sha Club 4; Special Gym 1-2-3.

PERRY, THELMA

Rho Kappa Sigma 3-4; Pine Knot Staff 4; Chorus 1-2-3.

PETERS, MARTHA

Special Gym 1.

PINNER, ELEANOR

Jr. Orchestra 1; Sr. Orchestra 1-2-3-4; Chorus 1-2; Gold and White 1-2-3-4.

POMPA, NICK

Class Basketball 3-4; Football 2-3-4; Track 3-4; Class Football 4;

RAINEY, GRACE

Sr. Orchestra 1-2-3-4; Chorus 3-4; Special Gym 1-3; Contest, Violin 3-4; Round-Up, Violin 3.

RAY, ADELAIDE

Jr. Orch. 1; Sr. Orch. 1-2-3-4; Chorus 2-3-4; Tri-Hi-Y 2-3-4; Var. B.B. 2; Class B.B. 1; Varsity Baseball 3; Contest 2-3-4; Sha Club 4; Round-Up 2-3-4; Class Program 3-4; Gamma Tau Gamma 2-3-4; String Quar. 2-3; Mixed Quar. 2-3; Girls' Trio 2-3-4; Gym Exhib. 1-3; Veola 1.



THE PINE KNOT

**REYNOLDS, IDA ROSE**

Jr. Chorus 1; Tri-Hi-Y 3-4; Quill and Scroll 3-4; Pine Knot Staff 4; Gold and White 3.

**ROYER, RALPH**

Band 1-2-3-4; Orchestra 3-4; Chorus 2-3-4; Contest 1-2-3-4; Music Lit. Contest 4; Gym Exhibition 1; Gamma Tau Gamma 2-3-4;

**SANDERSON, VIRGINIA**

Sr. Orchestra 1-2-3-4; Chorus 2-3-4; Special Gym 1-3.

**SAWYER, MARGARET**

Chapel Play 4.

**SCHMELZER, IRENE**

Special Gym 1; Ring Tennis 3; Pine Knot Staff 4; Posture Contest 3-4.

**SHAWGO, LUCILLE**

Jr. Orchestra 2; Class B.B. 1-2-3-4; Varsity B.B. 1; Ring Tennis 2; Sha Club 4; Class Program 4; Special Gym 3.

**SMITH, PAUL**

Ast. F.B. Mgr. 1; Soph. Jr. Plays 2-3; Band 1-2-3-4; Orch. 1-2-3-4; Chorus 1-2-3-4; Jr. Hi-Y 2; Sr. Hi-Y 3-4; Pres. Sr. Hi-Y; Pres. Jr. Hi-Y; Pres. Sr. Class; Cl.B.B. 1-2-3-4; Trk. 2-4; Sr. Sci. Club 4; Jr. Sci. Club 3; Pine K. 3; Stu. Coun. 3-4; Cheer Lead. 3-4; Ext. Spk. 2-4; Round-Up 2; Cl. F.B. 3-4; Jr. Orch. 1; N.C. S.C. 3; S.M.F.L. C. 3; Woodw. Ensemble 2-3-4; Gym Ex. 3; B. Quar. 2; Brass Quar. 2; Drum Major 4; G. T. G. 2-3-4; Jr. Play 3;

**SNYDER, ESTHER**

Play 4.

**SOWERS, VIOLA**

Sha Club 4; Gym Exhibition 1.

**SPEARS, BERNICE**

Jr. Orchestra 1-2; Chorus 2-3-4; Gym Exhib. 1-2-3; Class Basketball 2-3-4; Music Lit. Contest 3-4; Gamma Tau Gamma 2-3-4; Rho Kappa Sigma 4.

**STECKLER, MARY**

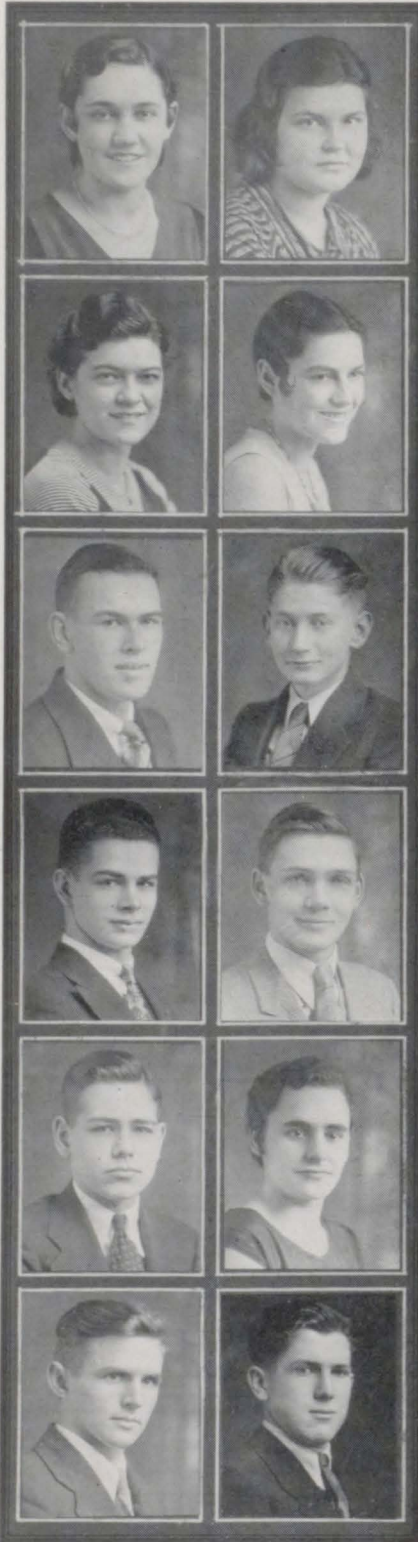
Pine Knot Staff 4; Posture Contest 3-4.

**STONE, TWYLA**

Special Gym 1; Baseball 2.



THE PINE KNOT



SUTHERLAND, HELEN  
Special Gym 1-2; Sha Club 4.

SWOPE, DOROTHY  
Special Gym 1; "Stuffed Owls"  
3.

TAIT, MILDRED  
Orch. 1-2-3-4; Chorus 1-2-3-4;  
Tri-Hi-Y 2-3-4; Gym Exhibition  
1-2; Class Basketball 1; Contest,  
Piano 2; Contest, Play 4; Round-  
Up 2-3; Girls' Trio 3; Mixed  
Quartette 2; Double Bass Solo 3-  
4; Gamma Tau Gamma 2-3-4.

THOMPSON, LILLIAN  
Baseball 2; Ring Tennis 2.

THROCKMORTON, THOMAS  
Waynesburg High 1-2-3; Hi-Y 3-  
4; Class Basketball 3-4; Track 3;  
Chorus 3.

UBER, WILLIAM  
Class Football 3-4.

VINCENT, DEAN  
Pine Knot Staff 4; Class Basket-  
ball 1-2-4; Jr. Science Club 3;  
Science Club 4; Gold and White  
3-4; Gym Exhibition 1.

WALTERS, GLENN  
Jr. Hi-Y 2; Sr. Hi-Y 3-4.

WELCH, JACK  
Jr. Hi-Y 2; Sr. Hi-Y 3-4; Jr.  
Science Club 3; Chorus, 2-3-4;  
Pine Knot Staff 4; Round-Up 2-  
3-4; Jr. Sr. Banquet Com. 3.

WELTON, THELMA  
Class Basketball 2-3-4; Ring Ten-  
nis 1-2; Baseball 1; Rho Kappa  
Sigma 3-4; Round-Up 3; Gym  
Exhibition 1.

WESTLAKE, PAUL  
Wesley Volley Ball 2-3; Wesley  
County Round-Up 3; Wesley  
High 1-2-3; Pine Knot Staff 4.

WIGTON, DONOVAN  
Football 2; Class Basketball 2-3-  
4; Track 3-4; Special Gym 1.



THE PINE KNOT

WILLIAMS, GLADYS

WOODS, SHIRLEY

Wesley High 1-2-3; Wesley Chorus 3; Venango County Contest 2-3; Wesley High, Class Program 3; Sha Club 4.

WRIGHT, FRANCES

Orchestra 4; Chorus 1-2-3-4; Class Basketball 1-2-3-4; Contest 3; Quill and Scroll 3-4; Pine Knot Staff 3; Gold and White 4; Ring Tennis 3; Gym Exhibition 2-3-4; Gamma Tau Gamma 2-3-4.

YOUNG, BLANCHE

Girls' Chorus 1-2-3-4; Special Gym 1; Contest 4; Sr. Orchestra 2-3-4.

ZAHNIZER, MARTHA

Jr. Orchestra 1-2-3.

ZENDRON, LOUISE

Ring Tennis Team 2; Volley Ball 2; Class Basketball 4.

ZENOBI, CLARA

Special Gym 1.

ZICCARDI, ALICE



The following pupils were with the class of '33 sometime during our four years course:

Pearl Armstrong  
Paul Armstrong  
Aline Ashurne  
Eva Bish  
Margaret Blake  
Isabel Bowser

Vera Fera  
John Fera  
Fern Hilgar  
Evelyn Hummel  
Nellie McKay  
Frances McKnight

THE PINE KNOT





# THE PINE KNOT

## CLASS OFFICERS

President ..... Frederick Thomas  
 Vice President ..... Emory Miles  
 Secretary ..... Marian Manny  
 Treasurer ..... Carl Richards

## JUNIOR ROLL

Albin, Kathleen	Frisch, Howard	McCarl, Louise	Reed, Miriam
Allen, Ruth	Gardner, Lois	McCauslin, Paul	Reiser, Rose
Arnold, Harold	Gildersleve, Anna	McClelland, Richard	Reynolds, Charles
Ash, Harry	Gill, Kenneth	McClelland, Harry	Richards, Carl
Bagnall, Thomas	Gould, Helen	McClelland, Dorothy	Rider, Rita
Barber, George	Graham, Mark	McClung, Edna	Robinson, Roberta
Barber, Mary	Graham, Jack	McConnell, Paul	Rodgers, Herman
Bardelceik, Andy	Graham, Kenneth	McConnell, Robert	Royale, William
Barger, Ruth	Gregg, Jay	McConnell, Sara	Ryhal, William
Bohlender, Mildred	Grundy, Margaret	McCoy, Burton	Schall, Julia
Bollinger, Beryl	Gursky, Zygmunt	McCurdy, Esther	Schultz, Birdie
Bonanni, Flurry	Harmon, Margaret	McCurdy, Lloyd	Scott, Jane
Bonanni, John	Hilgar, Glenn	McDougall, Clifford	Sepik, Stephanna
Brown, Dorothy	Hinds, Theodore	McDougall, Erma	Shaffer, Helen
Brunton, Ralph	Hodgson, Thomas	McDowell, James	Shaffer, Russell
Buchanan, Ralph	Hoffman, Wilbur	McGill, Donald	Shawgo, Dewayne
Buchanan, Sara	Horseman, Walter	McGinty, Katherine	Shorts, Merle
Burton, Muriel	Howe, Richard	McLaughlin, Hilda	Shuler, Elizabeth
Calderwood, John	Hume, Robert	McNeish, Ruth	Snyder, Charles
Campbell, Lucille	Ifft, James	McWilliams, Calvin	Snyder, Goldie
Campbell, Mary	Isacco, Anna	Mechler, Dorothy	Snyder, Melya
Carruthers, Jack	Jackson, Paul	Middendorf, Charles	Spence, Amber
Caywood, Mary Lou	Jamison, Raymond	Miles, Emory	Stevenson, Dorothy
Christley, Wallace	Johnson, Frederita	Miles, Martha	Styers, Dorothy
Christy, Agnes	Joyner, La June	Miller, Dorothy	Styers, Frances
Conner, Alice	Kays, Alfred	Montgomery, Fay	Taylor, Alfred
Colicchio, Mary	Kays, Harold	Montgomery, John	Teare, Robert
Cookson, Dorothy	Kelly, Frances	Montgomery, Ruth	Thomas, Dorothy
Cookson, Joe	Kelly, Vincent	Moon, Kenneth	Thomas, Fred
Corce, Victor	Klink, Howard	Muir, Irvin	Thompson, Don
Cornelius, Paul	Klink, John	Naples, Regis	Thompson, Ruth
Coulter, Clyde	Knauff, Marian	Neyman, Mary	Turek, Mary
D'Antonio, Leonard	Kold, Mary	Nordstrom, Lucille	Urey, Esther Mae
D'Arcangelo, Isabel	Labor, Fred	Offutt, Glenn	Uber, Eugene
D'Arcangelo, Madeline	Lary, James	Paganelli, Roger	Vogan, Vanona
DeMarsh, Frances	Lehtner, James	Painter, Mary	Vogan, Paul
Deniker, Velma	Lightner, Margaret	Paxton, John	Wallace, Jack
Dight, James	Linninger, Winifred	Pearson, Charles	Wallace, Pauline
Dugan, James	Lutes, William	Perrine, Frances	Walters, Howard
Dyke, John	Maddalena, Viola	Perrin, Frances	Waterman, Marguerite
Faivre, Laurence	MacDougall, Alberta	Pizor, Don	Williams, Eleanor
Faivre, Naomi	Mannozi, Clara	Pizor, Paul	Williamson, Jean
Faull, Dorothy	Manny, Marian	Poole, Robert	Winger, Leroy
Fehrs, Williard	Marshall, Robert	Racz, Margaret	Wiseman, Esther
Fithian, Dick	Marnell, Anthony	Rainey, Hazel	Womer, Paul
Flannery, Albert	Mathieson, William	Pamsey, Grace	Zenobi, Anna
Fox, Kathryn	McBride, Evelyn	Ramsev, Olive	
Frantz, Hazel	McCall, Dorothy	Ray, Robert	

THE PINE KNOT





# THE PINE KNOT

## SOPHOMORE ROLL

Adams, Francis  
 Albright, Billy  
 Allen, Betty  
 Allen, Jane  
 Allen, John  
 Atwell, June  
 Baer, Charles  
 Barrow, Donald  
 Beatty, Helen  
 Bell, Tony  
 Belle, Theresa  
 Bennett, Harold  
 Bennett, Robert  
 Blake, Irene  
 Bollinger, Paul  
 Bonanni, Raymond  
 Book, Edward  
 Bruner, Leonard  
 Bryant, Alice  
 Buchanan, Charles  
 Buchanan, Helen  
 Buchanan, James  
 Cameron, Leroy  
 Campbell, Grace  
 Campbell, John  
 Campbell, Ruth  
 Carroll, James  
 Carruth, Dorothy  
 Carruth, Virginia  
 Carruthers, Ted  
 Cass, Dorothy  
 Christie, Eva Mae  
 Christy, Paul  
 Cicero, William  
 Clark, Frank  
 Clelland, Donald  
 Coulter, Laurene  
 Coulter, Theodore  
 Covert, Ruth  
 Cozad, Ferne  
 Craft, George  
 Currie, Clyde  
 Davis, Emerson  
 Davis, Victor  
 DeGregory, James  
 DeSalvo, Orlando  
 Dickson, Earl  
 Dickson, Willard

Dight, Edna  
 Dresch, Willard  
 Eakin, Kenneth  
 Elder, Mary  
 Elliott, Winifred  
 Filer, Irene  
 Findley, Mary  
 Fithian, David  
 Fitzgerald, Rita  
 Fryman, Charles  
 Gardner, Margaret  
 Gibb, Margaret  
 Gibson, Martha  
 Giles, Jack  
 Giles, William  
 Gilliland, Russell  
 Gilliland, Walter  
 Gordon, Dorothy  
 Gordon, Virginia  
 Gould, Pearl  
 Gregory, Rachel  
 Hamer, Hazel  
 Harry, June  
 Hedglin, Twyla  
 Hennon, Lucille  
 Hinds, Floyd  
 Hinds, June  
 Hoagland, Marian  
 Halaus, Francis  
 Hudson, Aileen  
 Hulbert, Shirley  
 Hunter, George  
 Huskin, Mary Ellen  
 Isacco, James  
 Jack, Burdette  
 Kerr, Helen  
 Klink, William  
 Knauff, Betty  
 Lagnese, Tony  
 Lininger, Virginia  
 Lucas, Mary Ellen  
 Lutz, Mary Grace  
 MacArthur, Grace  
 MacRae, Alex  
 Maddalena, Nick  
 Manny, Virginia  
 Martin, Edith  
 Matthews, Charlotte

McBride, Bernice  
 McBride, Kathryn  
 McCamey, William  
 McCarl, James  
 McClelland, Samuel  
 McConnell, Adrian  
 McConnell, Merle  
 McCoy, Ruth  
 McGill, Helen  
 McGill, Virginia  
 McKnight, Perry  
 McKnight, Thomas  
 McLaughlin, Milford  
 McWilliams, Frank  
 Millar, Elizabeth  
 Millsop, Virginia  
 Milner, William  
 Montgomery, Vivian  
 Moore, Lois  
 Morrison, Mary E.  
 Mullen, Jack  
 Muir, Alice  
 Naples, Cora  
 Negri, Erma  
 Nelson, Maxine  
 Nutt, Evelyn  
 Orr, Madeline  
 Orr, Harold  
 Osborn, Helen  
 Osborne, William  
 Painter, Mary  
 Palm, Alberta  
 Palmer, Aberta  
 Palmer, Betty  
 Patterson, Frank  
 Patton, Ruth  
 Paxton, Ruth  
 Paxton, Edward  
 Pearson, Charles  
 Peden, Sylvia  
 Perry, Anna  
 Peters, Dorothy  
 Pettit, Louise  
 Phillips, Dorothy  
 Platt, Charles  
 Platt, Jean  
 Price, Alice  
 Rea, Beatrice

Rea, Elton  
 Reagle, Alice  
 Reno, Edward  
 Reiser, Ruth  
 Rhodes, Raymond  
 Richardson, Dorothy  
 Robinson, Kenneth  
 Rodgers, Dean  
 Ross, Hazel  
 Rossman, Anna Mary  
 Sawyer, Ruth  
 Sefton, Harold  
 Shipton, Lucille  
 Shumaker, Wayne  
 Sidley, Foster  
 Smith, John  
 Smith, Lois  
 Smith, Martha  
 Snyder, Mary  
 Soppitt, Sally  
 Spaulding, Margaret  
 Steckler, Matthew  
 Stewart, Bertha  
 Stewart Rosemary  
 Stine, Dorothy  
 Taylor, Ethel  
 Thompson, Kenneth  
 Thompson, Ruth  
 Todd, Mary  
 Townley, Laverne  
 Uber, Kathleen  
 Uber, Mary  
 Vincent, Sara  
 Vogan, Lucille  
 Walters, Loyal  
 Walters, William  
 Warren, Edmond  
 Weiss, William  
 White, Betty  
 Wible, John  
 Wigton, Earl  
 Wigton, Edward  
 Williams, Glenn  
 Williamson, Leontine  
 Williamson, Louise  
 Winger, Maxine  
 Wolstoncroft, Martha  
 Womer, Wayne

### IN MEMORIAM

Earnest Husing  
 Alberta Cookson

THE PINE KNOT





# THE PINE KNOT

## FRESHMAN ROLL

Adams, Mary Lou  
 Allen, Robert  
 Anderson, Harlan  
 Armenia, Dominick  
 Armenia, Frances  
 August, Dick  
 Aylsworth, Annabelle  
 Bagnall, Rose  
 Baer, Winfield  
 Bardelceik, Edward  
 Barnes, Pauline  
 Bashline, Donald  
 Benner, Robert  
 Black, Irene  
 Boyd, Betty  
 Braine, David  
 Breese, Isabel  
 Breneman, Robert  
 Brown, Elizabeth  
 Brown, Harold  
 Buchanan, Robert  
 Bulfone, Della  
 Burton, Jean  
 Campbell, Helen  
 Campbell, Ruth  
 Christie, Ernest  
 Christie, Helen  
 Christy, Viola  
 Christley, Kenneth  
 Cicero, James  
 Colicchio, Angeline  
 Coursen, William  
 Cook, Howard  
 Cookson, Wayne  
 Coulter, Gerald  
 Davidson, Celesta  
 DeCarlo, Emma  
 Deniker, John  
 Dorrington, Josephine  
 Dukovich, John  
 Dumbroski, James  
 Dumbroski, Mary  
 Eakin, Florence  
 Emery, Merle  
 Englehart, Dick  
 Englehart, Frank  
 Fascetti, Edlo  
 Filer, Viola  
 Forbes, James  
 Forker, Tommy

Foster, Helen  
 Frampton, Richard  
 Giesmann, Elbert  
 Giles, Paul  
 Gill, Laverne  
 Gilliland, Jean  
 Gilliland, Robert  
 Gills, Jack  
 Gills, Leandra  
 Gilmore, Ethel  
 Graham, Beatrice  
 Gregg, Ruth  
 Gregg, Wayne  
 Griffith, Clara  
 Haid, Charles  
 Hall, Betty  
 Harry, Winsome  
 Heasley, Ethel  
 Hilger, Lee  
 Hindman, Raymond  
 Hosack, Gregg  
 Hoyt, Peggy  
 Hulbert, Ruth  
 Husar, John  
 Husband, William  
 Hutcheson, John  
 Hutcheson, Walter  
 Johnston, Ralph  
 Jones, Edward  
 Kavs, Dorothy  
 Keller, Eldon  
 Kellogg, William  
 Kermish, Andrew  
 Ketler, George  
 Ketler, Richard  
 King, Gaylord  
 King, George  
 King, Lorna Mae  
 Kolb, Laura  
 Kovach, Betty  
 Krafchick, Anthony  
 Lee, Kenneth  
 Lees, Helen  
 Lester, Russell  
 MacTavish, Grace  
 Manozzi, Angeline  
 Martin, Ruth  
 Maxwell, Sara  
 McClelland, Kinter

McCommon, Richard  
 McCoy, George  
 McCoy, Pearl  
 McCullough, John  
 McDougall, Joseph  
 McFeaters, James  
 McGinty, Francis  
 McGinty, Joseph  
 McNeil, Jean  
 McQuilken, Harry  
 Midberry, Hugh  
 Miles, Evelyn  
 Mitchell, Lois  
 Montgomery, Elma  
 Montgomery, Milton  
 Montgomery, Neil  
 Moon, Dorothy  
 Moon, Helen  
 Moon, Marion  
 Moore, Dorothy  
 Moore, Kenneth  
 Moore, Lucille  
 Moore, Naoma  
 Morris, Donald  
 Muffo, Frances  
 Neely, Gladys  
 Neely, Myrtle  
 Nix, Ruth  
 O'Connor, Betty  
 Offutt, John  
 Osburn, Ellis  
 Osborne, Fern  
 Osborne, Lillian  
 Painter, Mildred  
 Parker, George  
 Peranteau, Francis  
 Perrine, Betty  
 Perrine, Dorothy  
 Perrine, Harvey  
 Perrine, Rhoda  
 Pompa, John  
 Porter, Helen  
 Pritz, Eli  
 Racz, Mary  
 Reagle, Dorothy  
 Reed, Howard  
 Reed, Martha  
 Reno, Joseph  
 Richards, David

Richey, Virginia  
 Robson, Claire  
 Robson, Junior  
 Rongaus, Edward  
 Rossman, Ruth  
 Rouse, George  
 Rowe, Harry  
 Royer, Paul  
 Sepik, Mike  
 Shaffer, Bertha  
 Sharpe, Almerta  
 Shawgo, Willard  
 Smith, Clifford  
 Snyder, Don  
 Snyder, Florence  
 Snyder, Helen  
 Snyder, Sara  
 Southern, Lucille  
 Spence, Betty  
 Stevenson, James  
 Stine, Burdette  
 Stutzban, George  
 Sutherland, Florence  
 Tice, Madeline  
 Trepasso, Thomas  
 Uter, Harvey  
 Uber, Helen  
 Uber, Warren  
 Urey, Merle  
 Vinton, William  
 Viola, Emma  
 Vogan, Howard  
 Waterman, Milton  
 Weber, Dorothy  
 Weber, Kenneth  
 Weller, Paul  
 Wigton, Erma  
 Wigton, Ruth  
 Wilkie, Craig  
 Wilkie, Evelyn  
 Williams, Ethelwyn  
 Williamson, Robert  
 Wilson, Charles  
 Wingor, Louise  
 Wolford, Mildred  
 Wolford, Frank  
 Young, Emerson  
 Yury, Robert  
 Zenobi, Ernest  
 Ziccardi, Edith

*P. E. J.*

*W. C. R.*

*Paul Vogan*



STUDENT COUNCIL

Robert Allen  
 Eddie Bowden  
 Eleanor Forker  
 Marian Manny

Margaret Mulqueen  
 Evelyn Nutt  
 Frank Patterson  
 Carl Richards

Paul Smith  
 Fred Thomas  
 Paul Vogan  
 Adviser, G. H. Crowther



**HI-Y ROLL AND OFFICERS**

President—Paul Smith  
Treasurer—Horace Gregg

Vice-President—Harvey Braine  
Sergeant-at-Arms—Edward Bowden

Secretary—Harold Hoagland  
Adviser—Mr. Hartman

Adams, Kenneth  
Ash, Harry  
Bartholomew, John  
Black, Kenneth  
Bowden, Edward  
Braine, Harvey  
Calderwood, John  
Carruthers, Jack  
Christley, Wallace  
Coulter, Clyde  
Cookson, Joseph  
Daugherty, James

Duffy, Elmer  
Fehrs, Willard  
Fithian, Richard  
Graham, Jack  
Graham, Mark  
Gregg, Horace  
Hoagland, Harold  
Horseman, Walter  
Howe, Richard  
Kelly, Vincent  
Lary, James

McClelland, Robert  
McConnell, Paul  
McCurdy, Lloyd  
McGill, Donald  
Meyer, Jack  
Miles, Emory  
Miller, Ralph  
Miller, William  
Montgomery, John  
Moon, Kenneth  
Myers, Raymond

Nickerson, Joseph  
Osborne, Homer  
Phipps, L. Verne  
Pizor, Paul  
Richards, Carl  
Reynolds, Charles  
Rozers, Herman  
Smith, Paul  
Thomas, Frederick  
Vogan, Paul  
Walters, Glenn  
Welsh, Jack

**TRI-HI-Y OFFICERS**

President—Martha Black

Vice-President—Pauline McBride

Secretary—Marian Manny

Treasurer—Emily Harshaw

**Counselors**  
Miss Smith  
Miss Jamison

**Members**  
Allen, Jane  
Black, Martha

Bowden, Carrie Virginia  
Bryant, Alice  
Caywood, Mary Lou  
Drake, Roberta  
Forker, Eleanor  
Hall, Bernice  
Harshaw, Emily

Linger, Winifred  
Manny, Marian  
Irwin, Helen  
Hueb, Luise  
Manny, Virginia  
McBride, Pauline  
McCurdy, Betty

McDougall, Lois  
Nordstrom, Lucille  
Ray, Adelaide  
Reynolds, Ida Rose  
Rider, Rita  
Tait, Mildred  
Wiseman, Esther





SCIENCE  
CLUB

SHA  
CLUB



JR. HI-Y

GAMMA  
TAU  
GAMMA



# THE PINE KNOT

## SCIENCE CLUB OFFICERS

President—Harvey Braine	Vice President—Edward Bowden	Secretary and Treasurer—Horace Gregg
-------------------------	------------------------------	--------------------------------------

**ROLL**

August, Robert Bowden, Edward Adams, Kenneth Braine, Harvey Duffy, Elmer George, Harold	Ghost, John Gregg, Horace Linderman, John McCarl, David Miller, William	Miller, Ralph Moore, George Meyers, Raymond Nickerson, Joseph Osborne, Homer  Phipps, LaVerne Smith, Paul Vincent, Merrill Graham, Mark Brunton, Ralph Richards, Carl
--	---	--

The Science Club was organized in 1924 by Harry Manson.

## SHA CLUB

	Adviser—Miss Luceille Persch	
--	------------------------------	--

Anna Ruth Anderson Goldie Bonnanni Lenore Brown Mabel Cookson Mae Dickey Flora Fascetti	Edith Gills Thelma Hillkirk Marie Holmes Ethel Hutcheson Helen Irwin	Josephine King Mary Esther Krah Mary McGowan Rose Moore Margaret Mulqueen  Louella Neely Freda Patterson Adelaide Ray Lucille Shawgo Viola Sowers Helen Sutherland
--	--	---

## JUNIOR HI-Y ROLL AND OFFICERS

President—Frank Patterson Treasurer—Perry McKnight	Vice-President—Paul Christy Sergeant-at-Arms—Loyal Walters	Secretary—Thomas McKnight Adviser—Mr. McBride
---	---	--

Clelland, Donald Cookson, Wayne Fithian, David Forbes, James Frampton, Richard Gilliland, Russell Hosock, Gregg Hutcheson, John Hutcheson, Walter Ketler, George	Ketler, Richard King, George Klink, William Maddalena, Nick McClelland, Kinter McClelland, Samuel McConnell, Adrian McKnight, Perry McKnight, Thomas Milner, William	Mullen, Jack Patterson, Frank Perrine, Harvey Sefton, Harold Smith, John Vogan, Howard Walters, Loyal Walters, William Wible, John Yury, Robert
---	---	--

## GAMMA TAU GAMMA

President—Joe Nickerson	Vice-President—Bill Kuhn	Secretary-Treasurer—Martha Black
Assist. Sec.-Treas.—Betty McCurdy		Mentor—Miss Johnston

**Members**

Annable, Bill Bartholomew, John Black, Martha Bowden, Edward Burnette, John Drake, Roberta Fithian, Dick George, Harold	Gregg, Horace Hall, Bernice Huep, Luise Kuhn, Bill Linderman, John McCarl, David McCurdy, Betty	Meyer, Jack Millsop, Eleanor Montgomery, Margaret Myers, Jack Nickerson, Joe Osborne, Homer Ray, Adelaide  Royer, Ralph Smith, Paul Spears, Bernice Tait, Mildred Wright, Frances Moved Away Armstrong, Paul
--	---	--



## QUILL AND SCROLL

President ..... John Calderwood	Vice-President ..... Eleanor Ketler	Secretary-Treasurer .. Dorothy Mechler
---------------------------------	-------------------------------------	--

**Members**

Martha Black Agnes Christy James Daugherty	Luise Huep Margaret Montgomery Gladys Osburn	Ida Rose Reynolds Helen Shaffer Dorothy Stevenson  Frances Wright Adviser—Miss Robbins
--	--	---

## GOLD AND WHITE STAFF

Editor—Martha Black Organizations— Luise Huep, James Daugherty	Sports— Ralph Miller, Margaret Montgomery	Personals— Frances Wright, Ruth Anderson Eleanor Millsop
--	--	--

Home Room Reporters—Martha Aylsworth, Berneice Hennon, Betty McCurdy, Rose Moore, Merrill Vincent, Gladys Osburn, Marian Manny, Rita Rider, Dorothy Mechler, Dorothy Cookson, Robert Poole, Kathleen Albin, Winifred Elliott, Mary Findley, Ruth Patton, Bety Palmer, Helen Lees, Evelyn Miles, Lucille Moore, Mary Lou Adams, Francis Peranteau, Elverna McBride





**BOYS CHORUS**

Albright, William  
Annable, Wilham  
Black, Kenneth  
Cameron, Leroy  
Birnley, Merle  
Book, Edward  
Campbell, John  
Christy, Paul

Daugherty, James  
Dugan, James  
Eakin, Kenneth  
Fithian, Dick  
George, Harold  
Giesman, Carl  
Gilliland, Russell

Gill, Kenneth  
Hodgson, Thomas  
Gilliland, Walter  
Marshall, Robert  
Robinson, Kenneth  
Royer, Ralph  
Shorts, Donald

Smith, Paul  
Thompson, Donald  
Welch, Jack  
Milner, William  
Nickerson, Joe  
McDougall, Clifford  
Pearson, Charles

**GIRLS CHORUS**

Allen, Jean  
Allen, Ruth  
Anderson, Anna Ruth  
Barber, Mary  
Black, Martha  
Cameron, Agnes  
Campbell, Grace  
Campbell, Lucille  
Campbell, Ruth  
Caywood, Mary Lou  
Christie, Eva Mae  
Conner, Alice  
Cookson, Dorothy  
Coulter, Laurene  
Cozad, Fern  
Elliott, Winifred  
Faull, Dorothy

Gardner, Lois  
Gardner, Margaret  
Gildersleve, Anna Belle  
Hennon, Berneice  
Hoagland, Marian  
Hulbert, Shirley  
Huskin, Beva  
Huskin, Mary Ellen  
Joyner, June  
Kerr, Helen  
Lightner, Margaret  
Lininger, Virginia  
Matthews, Charlotte  
McBride, Evelyn  
McCurdy, Betty  
McGill, Virginia  
Millsop, Virginia

Montgomery, Vivian  
Morrison, Mary Elizabeth  
Neely, Louella  
Negri, Erma  
Nordstrom, Lucille  
Nutt, Evelyn  
Osborn, Helen  
Patrick, Edith  
Patterson, Freda  
Patton, Ruth  
Peden, Sylvia  
Perry, Anna  
Petitt, Louise  
Rea, Beatrice  
Rainey, Grace  
Rainey, Hazel  
Ray, Adelaide

Reagle, Alice  
Richardson, Dorothy  
Rider, Rita  
Robinson, Roberta  
Sanderson, Virginia  
Schall, Julia  
Scott, Jane  
Soppitt, Sally  
Spaulding, Margaret  
Spears, Bernice  
Tait, Mildred  
Williams, Eleanor  
Williamson, Jean  
Wiseman, Esther  
Wright, Frances  
Yung, Blanche



SENIOR ORCHESTRA

FIRST STRINGS—

Rainey, Grace  
 Sanderson, Virginia  
 Hulbert, Shirley  
 Bowden, Carrie Virginia  
 Gregg, Horace  
 Pinner, Eleanor  
 Conner, Alice  
 Osburn, Gladys  
 Calderwood, John  
 Cozad, Fern  
 Huskin, Beva

SECOND STRINGS—

Millsop, Eleanor  
 Cookson, Dorothy  
 Robinson, Roberta  
 Gardner, Lois  
 Wiseman, Esther  
 Elliott, Winifred  
 Rossman, Anna Mary  
 Moore, Lucille  
 Coulter, Laurene  
 Wright, Frances  
 Snyder, Sarah  
 Peden, Sylvia

VIOLAS—

Ray, Adelaide  
 Nordstrom, Lucille  
 Harmon, Margaret

CELLOS—

Montgomery, Margaret  
 Hall, Bernice  
 Soppitt, Sally  
 White, Betty Jane

BASSES—

Tait, Mildred  
 Campbell, Ruth  
 Haid, Charles  
 Caywood, Mary Lou



FLUTES—

Huep, Luise  
 Harshaw, Emily  
 Urey, Esther Mae

OBOES—

Taylor, Alfred  
 Perrine, Harvey

BASSOONS—

Montgomery, Ruth  
 Gilliland, Walter

CLARINETS—

Royer, Ralph  
 Pizor, Paul

TRUMPETS—

Moon, Kenneth  
 Howc, Dick  
 Montgomery, John  
 Walters, Loyal

HORNS—

Smith, Paul  
 Book, Edward  
 Geisman, Carl  
 Gilliland, Russell

TROMBONES—

Bashline, Don  
 Mendenhall, Elwyn  
 Eakin, Kenneth  
 Christley, Kenneth

PERCUSSION—

Young, Blanche  
 Lightner, Margaret





#### BAND ROLL

##### FLUTES—PICCOLO—

Huep, Luise  
Harshaw, Emily  
Urey, Esther Mae

##### OBOES—

Taylor, Alfred  
Perrine, Harvey

##### BASSOONS—

Montgomery, Ruth  
Gilliland, Walter

##### E FLAT CLARINET—

Shorts, Merle

##### B FLAT CLARINETS—

Royer, Ralph  
Nickerson, Joe  
Pizor, Paul  
Madellena, Nick  
Dugan, James  
McKnight, Thomas  
Harmon, Margaret  
Forbes, James  
Snyder, Raymond  
Barber, Cassius  
Giles, Jack  
Mercer, Billy  
McDowell, James  
Birney, Merle  
Walters, William  
Mechler, David

##### ALTO CLARINET—

Christy, Paul

##### BASS CLARINET—

Gregg, Horace

##### SAXAPHONES—

Easterbrook, David  
(Soprano)  
Marshall, Robert (Alto)  
Moon, Marion (Alto)

##### TRUMPETS—

Howe, Richard  
Moon, Kenneth  
Walters, Loyal  
Gursky, Zygmunt  
Black, Kenneth  
Montgomery, John  
Scott, James  
Elder, Paul  
Patterson, Frank

##### FLUEGAL HORN—

Elliott, Donald

##### FRENCH HORN—

Gilliland, Russell  
Smith, Paul  
Bartholomew, John  
Book, Edward  
Giesman, Carl  
Giles, Paul

##### TROMBONE—

Meyer, Jack  
Mendenhall, Elwyn  
Eakin, Kenneth  
Bashline, Don  
Montgomery, Neil  
Christley, Kenneth  
Allen, Robert

##### BARITONE—

Burnette, John  
Haid, Charles

##### TUBA—

Christley, Wallace  
Albright, Billy  
George, Harold  
Milner, William  
Gill, Kenneth

##### TYMPANI—

Fithian, Dick

##### DRUMS—

Fithian, David  
Buchanan, Robert  
Weber, Kenneth



**FOOTBALL**

Adams, Kenneth  
 Barber, George  
 Bardelceik, Andrew  
 Bell, Tony  
 Braine, Harvey  
 Brunton, Ralph  
 Cicero, William  
 Cookson, Joe  
 De'Antonio, Leonard

Fehrs, Willard  
 Graham, Kenneth  
 Gregg, Horace  
 Hoagland, Harold  
 Hoffman, Wilbur  
 Horseman, Walter  
 Ketier, George  
 Lagnesc, Tony

McCoy, Burton  
 Maddelena, Nick  
 Hutcheson, John  
 King, George  
 Klink, Howard  
 McKnight, Thomas  
 McWilliams, Frank  
 Moon, Kenneth

Moore, George  
 Myers, Raymond  
 Paganelli, Roger  
 Ryhal, William  
 Richards, Carl  
 Smith John  
 Thomas, Fred  
 Thompson, Donald  
 Vogan, Paul

**SCHEDULE**

**HOME GAMES**

	GC	Opp.
Oct. 1—Union High .....	13	0
Oct. 7—Sharpsville .....	18	13
Oct. 22—Sharon .....	0	14
Nov. 12—Farrell .....	0	6

**GAMES ABROAD**

Sept. 17—New Brighton ....	0	20
Sept. 24—Brookfield .....	0	6
Oct. 15—Ellwood .....	12	13
Oct. 29—Greenville .....	0	0
Nov. 5—Oil City .....	6	6



CLASS BASKETBALL WINNING TEAMS





**BASKETBALL SQUAD**

Joe Hartman, Coach	John Smith	Burton McCoy	Walter Horseman
Mr. McBride, Asst. Coach	George Moore	George King	Emory Miles
Carl Richards, Captain	Joseph Cookson	Roger Paganelli	Donald Thompson
Ralph Brunton, Manager	Kenneth Graham	George Barber	Frederick Thomas

The Grove City High School basketball team played a schedule of nineteen games which looked very tough at the first of the season. Nine victories qualified them for the county championship which they won by defeating the best of the county teams. Smith, Cookson, Graham and Richards led the scoring list. Coach Joe Hartman reached one of his ambitions by piloting a championship team. The team was able to reach this goal by the good team spirit of cooperation and the active support of the student body.

**HOME**

Dec. 27—Alumni .....16-15  
 Dec. 30—Butler .....19-21  
 Jan. 6—Sharon ..... 27-20  
 Jan. 17—Meadville ....27-18  
 Jan. 21—Franklin .....18-23  
 Feb. 4—Oil City .....21-23  
 Feb. 10—Greenville ....27-14  
 Feb. 24 Mercer .....34-22  
 Feb. 28—Sharpville ....18-23  
 Mar. 3—Farrell .....32-24

**ABROAD**

Dec. 13—Oil City .....26-32  
 Dec. 20—Franklin .....22-23  
 Dec. 23—Butler .....14-24  
 Jan. 10—Meadville ....26-15  
 Jan. 13—Sharpville ...23-26  
 Jan. 20—Greenville ....34-17  
 Jan. 31—Mercer .....32-14  
 Feb. 14—Farrell .....26-29  
 Feb. 18—Sharon .....34-15

**TENNIS**

LaVerne Phipps, Capt. 2-3 years	George Henderson
Lowry Campbell	Richard Howe
Burton McCoy	Roger Paganelli, Manager

Coached by LeRoy Nutt for the past three years and captained by La Verne Phipps, the Tennis Team of G. C. H. S. has shown much power; for in its three years of existence it has lost only one match.



**TRACK**

George (Butch) Moore was the track captain of 1932. The letter men were Moore, Campbell, Cookson, Erskine, August, McCarl, George Arnold, Ray, Schultz, Allen, Braine, and Floyd Coulter

Grove City had three men qualify to enter the state meet—Moore, Schultz, and George Arnold.

In the Geneva Interscholastic meet at Beaver Falls, Grove City scored five points and made 7th place for Class A schools.

**MEETS**

Grove City 53 ..... Greenville 59    Grove City 43 ..... Butler 79    Grove City 77 .. New Wilmington 27  
 Grove City 70 ..... Harrisville 11 ..... Karnes City 20



**EIGHTH GRADE**

Albin, Jean  
 Arnold, Edna  
 Barber, Cassius  
 Barber, Paul  
 Barger, Malcom  
 Brown, Ralph  
 Campbell, Mary  
 Clelland, George

Collings, Elizabeth  
 Easterbrooks, David  
 Elder, Paul  
 Elliott, Donald  
 Kapp, Numer  
 Kelly, Jack  
 King, John

McBride, Elverna  
 Mechler, David  
 Mercer, William  
 Miles, Emerson  
 Parker, Russell  
 Paxton, John  
 Paxton, Marie

Perry, Betty  
 Ray, Merle  
 Reed, Kathleen  
 Scott, James  
 Snyder, Raymond  
 Sutherland, Marian  
 Trepasso, Adorfo  
 Trepasso, Ralph

The Editorial Committee wishes to thank all those who have helped make this "depression" annual possible. We mention especially Mr. Hassler, printer, and Mr. Connor, photographer, who cut prices and did us many favors. The Northern Engraving Company of Canton, Ohio made a special discount, and we are indebted to Mr. Arthur Armour for panel and cover designs.



