

Using your online library account

Renew one at a time

Renew all titles with one click

Items On Loan

Form	Title	Author	Circ Renewed	Due Date	Lexile Level
Renew	Book	Whiskey in a teacup : what gro	Witherspoon, Reese, 1976-	0	12/4/2018
Renew	Large Print	So cold the river [text (large	Koryta, Michael.	2	12/6/2018

Outstanding fines and fees appear here.

Financial

No items to display

Balance: \$0.00

Lists you have created and saved appear here.

Saved Lists

Delete	View	Title	Author	Collection	Form
		Time's convert	Harkness, Deborah E.,	Adult Fiction	Book

Items you've placed a hold on appear here

Reserves

Cancel	Number in Queue	Reserved On	Status	Title	Author	Expired On	HO Barcode
		11/18/2018		Small great things : a novel /	Picoult, Jodi, 1966-		T 65560

See your reading history and filter by time range

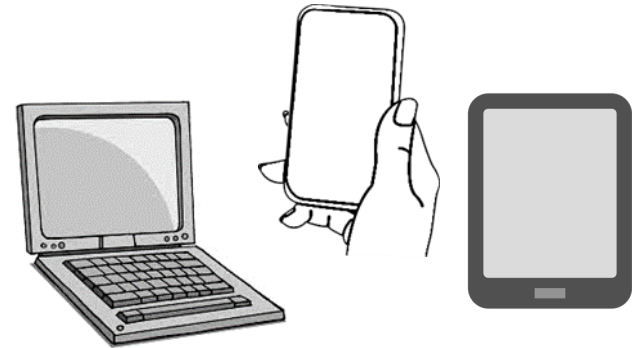
Circulation History

History - 8 history records

View	Title	Author	Call Number	Collection	Location	Checkout Date	Returned Date
	Night and day [text (large pri	Parker, Robert B., 1932-2010.	LP PARK	Large Print Fiction	GroveCity	11/15/2018	

Grove City Community Library
 125 West Main Street | Grove City PA 16127
 724-458-7320
www.grovecitypalibrary.org

your library account



Request, renew, and more
 from your phone, tablet or computer

Why set up an online library account?

You will be able to:

See which items you currently have checked out, and when they are due

See if you owe any fines

Place holds for items that our library owns but that are checked out to another patron

See and/or cancel any existing holds you have placed

View your checkout history (you can print it, too)

Create and manage reading lists

Renew items you have checked out*

*Note:

Library items may be renewed up to 3 times.

You will NOT be able to renew online if you have any items that are overdue, or any fines on your card, but we can renew items for you over the phone. Please call 724-458-7320.

Interlibrary Loan items may ONLY be renewed over the phone.

Setting up your online library account

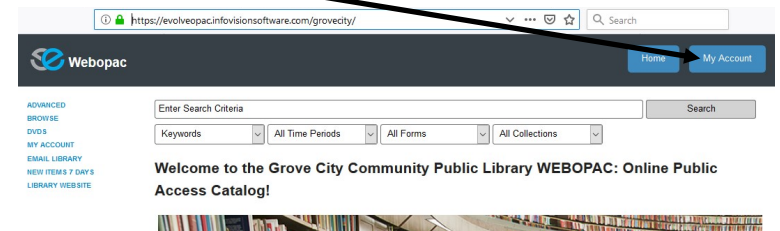
1. Go to grovecitypalibrary.org

2. Click on "Click here"



3. This will open up a new tab.

4. Click "My Account" (blue box on the right)



5. A pop-up menu will appear

6. Enter your barcode, including the letter "P" (e.g.: P12345).

NOTE: You might need to include a space between the "P" and the number (e.g. P 12345).

7. Your password is your last name, with the first letter capitalized (e.g. Smith)

Patron Login

To access your account, please login using your library barcode (located on your library card) and your last name. If your name is John Doe and your library barcode is P 12345, you would login in by typing your barcode (P 12345) and your last name (Doe). Please call the library at 7324-458-7320 if you are unable to login to your account.

Barcode

Password/PIN

Submit